

► Specifications

	Cosmolight [®] NZ		Cosmolight [®] QZ	
Type	Analog		CTP	
Plate Thickness (mm)	1.14	1.70	1.14	1.70
Hardness (ShoreA)	76	69	76	69
Base Material	PET Film			
Plate Size (mm)	457*610		635*762	
	610*762		762*1016	
	762*1016		900*1200	
	900*1200		1067*1524	
Image Reproduction				
Min. Dot size	175LPI 1%		200LPI 1%	
Min. Fine Line	20micron		20micron	
Min. Isolated Dot	150micron		150micron	
Available Inks	Solvent Ink, UV Ink, Water-based Ink			
Application	Flexible Package, Beverage Container, Label			

► Processing Time

	1.14mm	1.70mm
Back Exposure (sec)	8"~17"	50"~80"
Main Exposure (min) ¹⁾	4'~12'	4'~12'
Washout Time (min)	8'~15'	8'~15'
Drying Time (min)	5'~10'	5'~10'
Post Exposure (min)	5'~10'	5'~10'
Light Finishing (min)	3'~6'	3'~6'

1) UV-lamps Philips TLK40w/10R



All products are produced with a quality control system as certificated by "ISO 9001" for the world

PLATE MANUFACTURER

TOYOBO CO., LTD.

PHOTO-FUNCTIONAL MATERIALS DEPARTMENT

URL <https://www.toyobo-global.com/seihin/xk/>

2-8, Dojima Hama 2-chome, Kita-ku, Osaka 530-8230 Japan

TEL. +81-6-6348-3059 FAX. +81-6-6348-3099

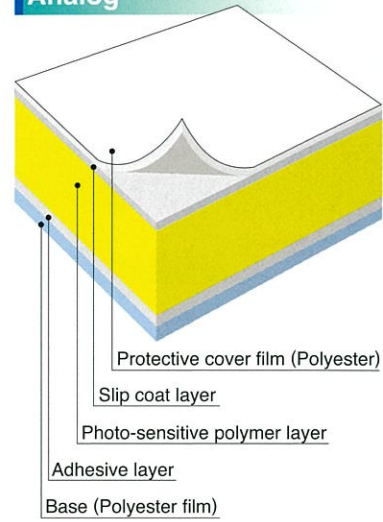
DISTRIBUTOR



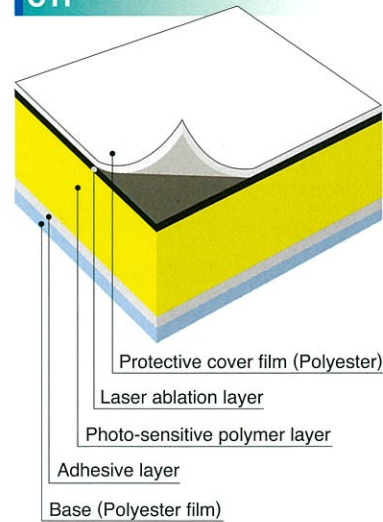
866.282.7697 | info@andersonvreeland.com

► Structure of Plate

Analog



CTP



TOYOBO
Ideas & Chemistry



TOYOBO Cosmolight[®] Z series
Water washable flexo plate

Cosmolight[®]

NEW NZ/QZ

Environmentally Friendly

Solvent Free

User Friendly





Cosmolight® are water washable flexo printing plates, developed with TOYOBO's unique polymer technology. As the pioneer of water washable photopolymer plates, TOYOBO has been contributing the printing markets with environment and user-friendly products over 40 years. Now, TOYOBO has newly developed Cosmolight® Z series that outperforms high-end flexo plates on printing quality and productivity, as truly innovating solution to replace offset printing.

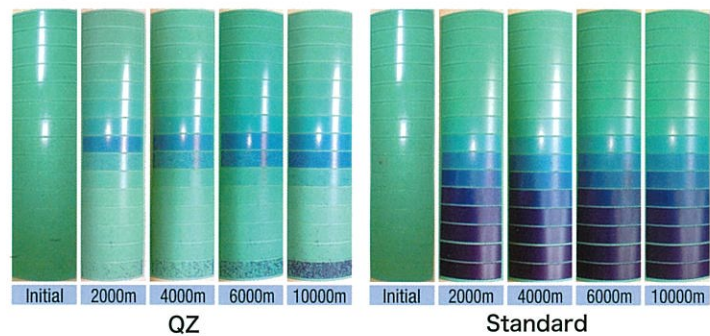
Improvement in Productivity

Saving Press-down Time

Plate Surface Upgrade

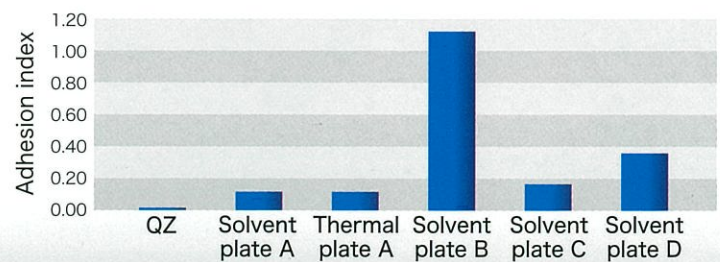
Ink-filling Minimized

With 40 years of proficiency in polymer engineering, developed plate that performs impressive ink-transfer but with less ink-filling in mid and highlight tones, enabling printers to print with less plate cleaning time, that keeps press downtime to a minimum.



Smoother Plate Surface

Polymers in Z series are modified to achieve smoother finished plate surface that collects fewer dusts during printing, enabling printers to reduce cleaning time.

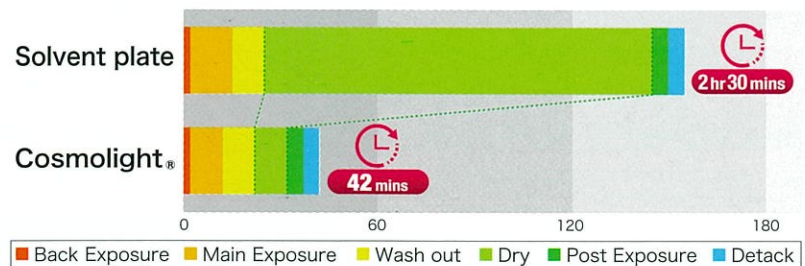


Saving Processing Time

Saving Processing Time

Press-ready Plate In One Hour Or Less

Cosmolight® utilizes solvent-free processing, enabling the plate to be completed with much shorter drying time.



High Productivity = Cost Saving

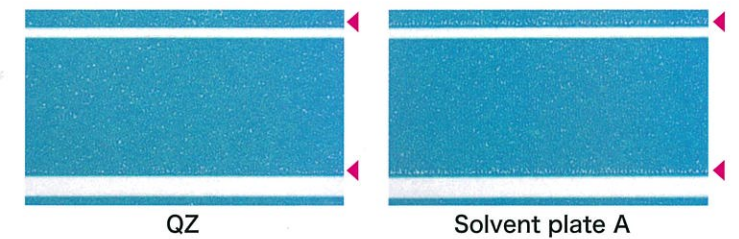
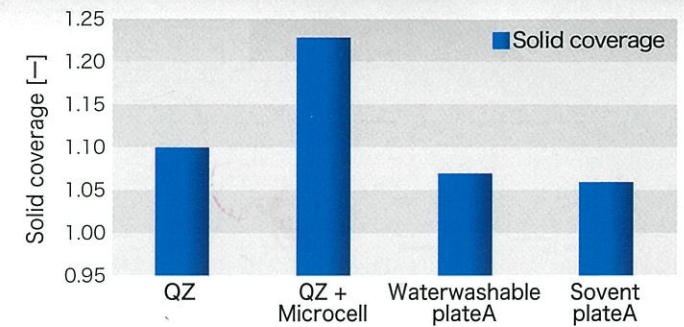
Improvement in Printing Quality

Ink Transfer

Solid Coverage Upgrade

Excellent Ink Transfer

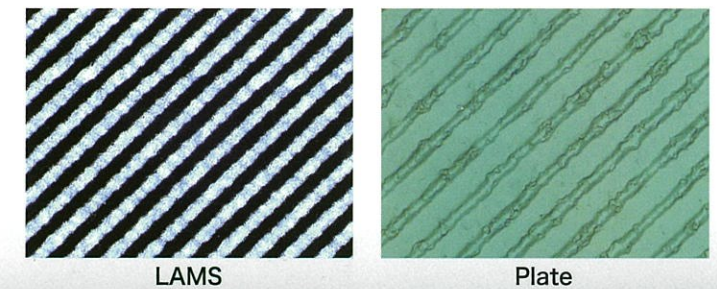
The plate achieves rich ink transfer; both ink density and coverage, with consistent printability on wide range of substrates such as coated paper, rough paper, and film.



Patterning on Solid Upgrade

Precise Screening Pattern Reproduction

QZ plate shows excellent performance with solid screening technology, commonly used in flexible packaging printing. Renewed polymer structure allows any patterns on LAMS layer to be reproduced sharply on plate solid area.



Printing Reproduction

Flat Top Dot

All Cosmolight® products are flat top dots built-in.

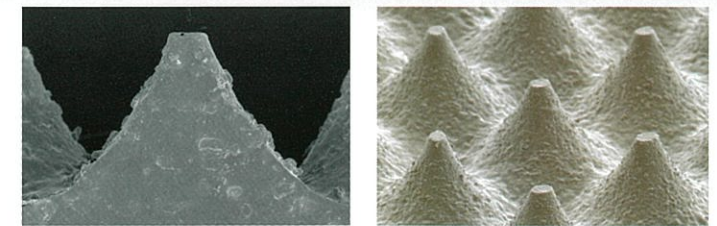


Image Reproduction & Durability Upgrade

Micro-dots Reproduction

QZ plate, with advanced polymer structure, enables printers to achieve the smallest dots on print without dot gain regardless of AM/FM or hybrid screening.

