

SAMM 800

SEMI AUTOMATIC MOUNTING MACHINE

- The Semi Automatic Mounting machine for Flexo label printers
- Eliminates mounting related press downtime
- Operator interaction time is minimized
- Extremely accurate mounting
- Extremely fast
- Optimal workflow



■ DESCRIPTION

The patented SAMM is one of the most accurate mounting machines in the world. All the plates are automatically positioned onto the sleeve using patented image recognition software. Minimum operator interference and training is required. This significantly increases efficiency in the prepress department as well as reducing overall costs. Return on investment is often less than a year.

Upon mounting the operator can choose an existing job or create a new job. The operator pre-positions the flexo plate roughly on the mounting table. Upon recognition of the mounting marks, the plate is automatically positioned. The pressure roller fixates the plate pneumatically onto the sleeve or cylinder after which the foot pedal is used to rotate the cylinder and mount the plate without air inclusion.

“When we installed the SAMM, it did the job 2,5 times faster than on our traditional mounting machine”

■ FEATURES



Robotics enable accurate positioning down to microns

Pressure roller ensures mounting with equal pressure and without air inclusions

HD Ethernet Cameras enable highest quality register mark image

Laser Pointers for quick pre-positioning

Automatic quality check ensures correct mounting

Windows based mounting software

Dual Drive system for both cylinder and sleeve compatibility (optional)

Automatic zero setting with Easyreg Recognition (optional)



SAMM USD

SEMI-AUTOMATIC MOUNTING MACHINE UPSIDE DOWN

- The Semi-Automatic Mounting Machine with easy roll onto mounting table
- Fast and easy
- Extremely Accurate
- Eliminates mounting related press downtime
- Automatic quality checks



■ DESCRIPTION

The SAMM USD features patented image recognition system and a robotic table which automatically positions the plate to the correct mounting position. With its laser pointers, HD Cameras and an HD monitor, the operator can quickly and accurately pre-position the plate. This is where the mounting machine takes over from the operator, in order to ensure precision up to 5 micron.

Once the plate is in position, the cylinder moves vertically down to fixate the plate, giving the highest possible fixation accuracy. The back-and-forth movement of the table allows for quick and easy mounting of the plate on the cylinder. The table functions as a pressure roller to eliminate air bubbles.

“No operator skills are required because of the automatic plate positioning”

■ FEATURES



Cushioned table to eliminate air-bubbles during mounting

Automatic Image Recognition

Robotics enable accurate positioning down to microns

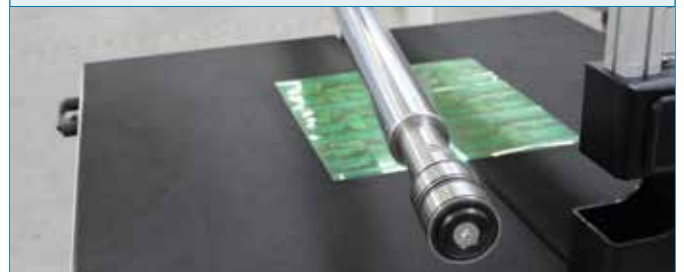
HD Ethernet Cameras enable highest quality register mark image

Laser Pointers for quick positioning

Window based mounting software

Robotic positioning

Direct Drive Air Mandrel (optional)

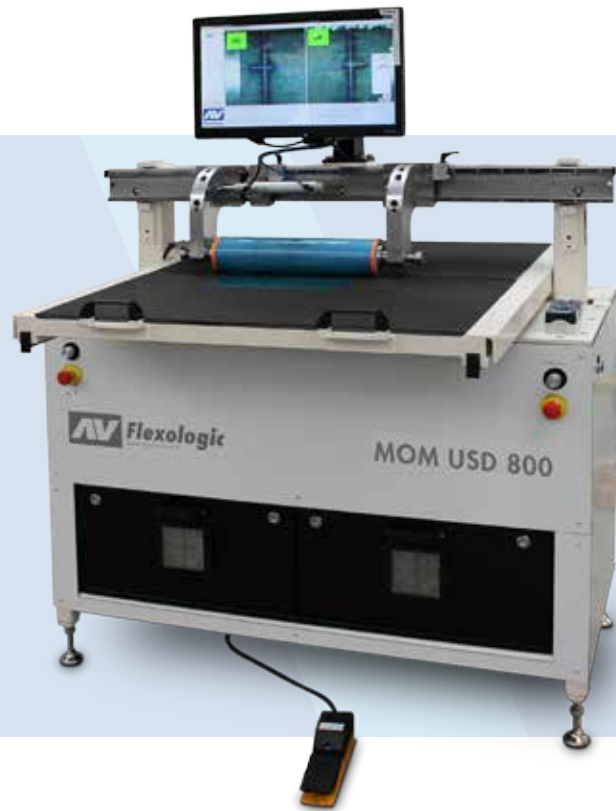


CHECK FOR ALL OUR EQUIPMENT AND VIDEOS WWW.FLEXOLOGIC.COM

MOM USD

MOUNT-O-MATIC UPSIDE DOWN

- Easy to operate
- Highly accurate
- Cost efficient
- Fast




■ DESCRIPTION

Aided by laser pointers, HD Cameras and an HD monitor, the operator can quickly and accurately position the plate on the MOM USD. Once the plate is in position, the cylinder moves vertically down to fixate the plate, giving the highest possible fixation accuracy. The back-and-forth movement of the table allows for quick and easy mounting of the plate onto the cylinder. The table functions as a pressure roller to eliminate air bubbles.

Optionally, the machine can be equipped with PATENTED Image Recognition. This indicates when the plate is positioned within tolerance. The Green OK sign lights up automatically, indicating the operator can proceed with mounting the plate to the cylinder.

“The MOM Upside-Down is designed for companies that seek for a quick and easy mounting solution in their pre-press department”

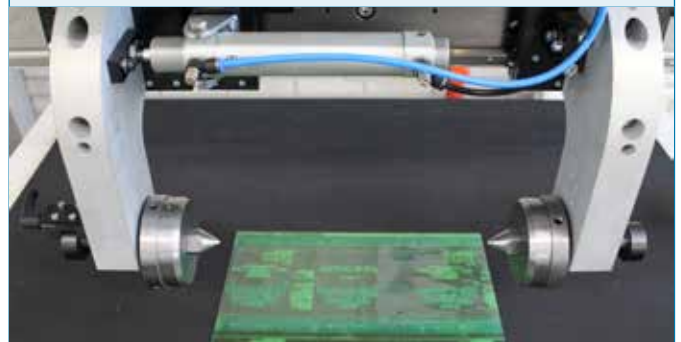
■ FEATURES


Camera encoders to move camera to mounting position.
Cushioned table to eliminate air-bubbles during mounting
HD Ethernet Cameras enable highest quality register mark image
Laser Pointers for quick positioning
Overlay system for color to color visual control

Store positions in the computer

Interchangeable Cylinder Locking System allow for hybrid functionality

Pneumatic clamping system for loading and unloading sleeves



MOM DD+

MOUNT-O-MATIC DIRECT DRIVE PLUS

- Motorized Mounting Machine
- Easy to operate
- Highly accurate
- High quality



■ DESCRIPTION

The system is based on two mounting marks that have been applied on the printing plate perpendicular to the mounting direction. A computer controls the motorized positioning of the cameras and moves them to the exact mounting position. The images of the cameras are displayed on 40" HD Screens. A Mounting table, at fixed working height, is used to position the printing plate. When the correct mounting position is reached, the cylinder moves vertically up too fixate the plate, ensuring highest accuracy.

■ FEATURES



Patented Overlay System takes a snapshot of the mounting marks which is shown when mounting consecutive plates for perfect color-to-color registration.

Direct Driven electronic shaft ensures higher accuracy in register as

HD Ethernet Cameras enable highest quality register mark image

Laser Pointers for quick positioning

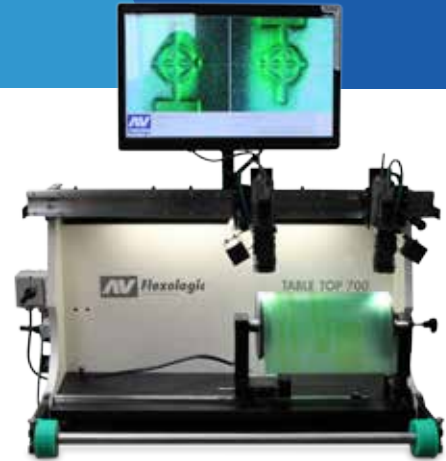
Vertically moving cylinder allows for a fixed working height and no need to adjust cameras.

Pressure roller ensures mounting with equal pressure and without air inclusion



TABLETOP

- The basic manual mounting solution
- Easy to use
- Touch screen



■ DESCRIPTION

The TableTop can be equipped with brackets or cones to support cylinders or with an air cylinder to mount with sleeves. The TableTop is provided with two digital colour cameras and a touchscreen monitor. The system of mounting is based on two mounting marks that have been applied on the printing plate. A zoom lens enables several enlargements. The two sideways moveable cameras display the image of the mounting marks on the monitor. The printing plates are positioned and mounted with the help of hairlines on the monitor. When the cameras are fixed in position the next plates are mounted in exactly the same way. Afterwards, a snapshot of each mounting mark can be taken. The snapshot is displayed and stored as proof for correct mounting.

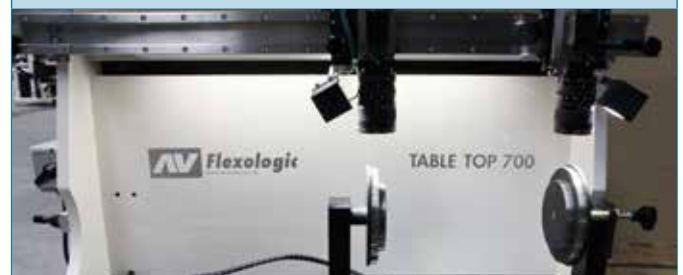
■ FEATURES

Patented Overlay System takes a snapshot of the mounting marks which is shown when mounting

Mounting Table: to support the plate during the mounting process. An air spring prevents the table from dropping down while positioning the table.

Tape holder: to hold tape parallel to the mounting cylinder, so the operator can mount the tape fast and correct.

HD Cameras for enlarged display on touchscreen



SPECIFICATIONS

	SAMM & MOM 800	SAMM & MOM 1100	SAMM & MOM USD 500	SAMM & MOM USD 800	TABLETOP
Max Width	800 mm	1100 mm	500 mm	800 mm	700 mm
Max Repeat	850 mm	850 mm	850 mm	850 mm	660 mm
Min Repeat	230 mm	230 mm	230 mm	230 mm	210 mm
Sleeve model	yes*	yes	yes	yes*	yes
Cylinder model	yes	yes	yes	yes	yes
Cylinder & Sleeve model	yes	yes	yes	yes	yes

*Max width is 850 mm

AV Flexologic

HEAD OFFICE

AV Flexologic B.V.
H. Kamerlingh Onnesweg 2
P.O. Box 252
NL-2400 AG Alphen aan den Rijn
The Netherlands

Tel. +31 (0)172 434221
Fax +31 (0)172 437919
Mail av@flexologic.nl

WWW.FLEXOLOGIC.COM

■ AV FLEXOLOGIC - WE INNOVATE!

AV Flexologic BV's mission is to deliver highly innovative solutions in the Flexographic industry in between the graphics and press departments. We strive to save cost, and increase efficiency and quality for our customers.

We achieve this by digitalizing traditional workflows and continuously improving on existing equipment with advanced technology and inventing new equipment.

■ OTHER EQUIPMENT OF OF AV FLEXOLOGIC

■ PLATE MAKING EQUIPMENT



■ CORRUGATED POSTPRINT MOUNTING MACHINES



■ CORRUGATED PREPRINT MOUNTING MACHINES



■ WIDE WEB MOUNTING MACHINES



■ VISCOSITY CONTROL SYSTEMS



■ TECH SLEEVES SLEEVES AND BRIDGES

