



Photo-sensitive Printing Plate
Printight[®]

Printight[®]



All products are produced with a quality control system as certificated by "ISO 9001" for the world

PLATE MANUFACTURER

TOYOBO CO., LTD.

PHOTO-FUNCTIONAL MATERIALS DEPARTMENT

URL <http://www.toyobo.co.jp/e/>

2-8, Dojima Hama 2-chome, Kita-ku, Osaka 530-8230 Japan
TEL. +81-6-6348-3059 FAX. +81-6-6348-3099

DISTRIBUTOR

Empty box for distributor information

Friendly to earth, comfortable to human...

T O Y O B O

Photo-sensitive Printing Plate

Printight®

Pioneer of Water-wash Photo-sensitive Printing Plate

We have been leading the letterpress printing as the pioneer of water-wash photo-sensitive printing plate Printight®. Wide range of applications and characteristics of TOYOBO Printight® are shown in this catalogue. Please check each application and find out an appropriate plate you need.

Printight® Characteristics

1. Washout with water

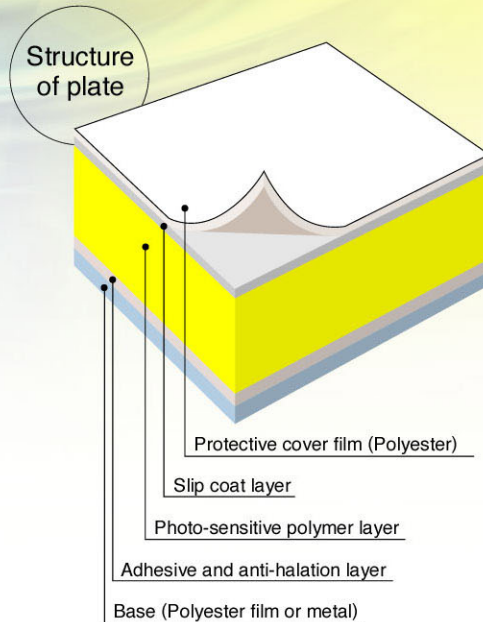
TOYOBO Printight® makes customers of this system possible to use ordinary water for washout.

2. Transparent and flexible plate

Transparent polyester film as a support material gives excellent dimensional stability and easy processability to printing machines. Steel base plates are also available.

3. Slip coat

Has slip coat to get good contact between the plate and the negative film. You can use plain negative film.

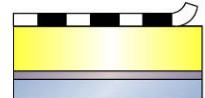


Printight® Properties

- Spectral sensitivity : 300~400nm
- Resolving capability : 150—175 lines/inch
- Minimum dot image : 0.10mm in diameter (0.004")
- Minimum line image : 0.03mm in width (0.0011")

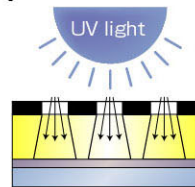
Printight® Plate-making Process

1 Contact with negative film



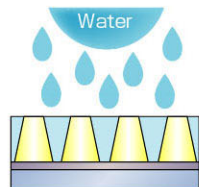
Remove the cover film and place a negative film on the undeveloped plate. Use a negative film having the optical density of no less than 3.0.

2 Exposure



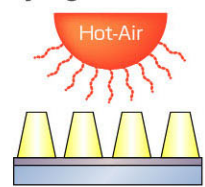
Expose the plate through the negative film to UV light having 360 nm wave length. Determine the correct exposure time using a 21 steps grey scale. Follow "TIPS FOR Printight" in each case.

3 Washout



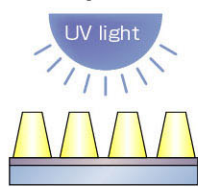
Remove the negative film. Washout the exposed plate with water. Use the special washout machine suitable for TOYOBO Printight®. Washout time depends on the thickness of the plate. Follow "TIPS FOR Printight" in each case. Rinse the washed out plate with fresh water.

4 Drying



Dry the plate in a hot-air dryer after taking off the surface water with a sponge roll. Drying time depends on the type of the plate. Follow "TIPS FOR Printight" in each case.

5 Post exposure



Expose the developed plate after drying again to UV light in order to get stability. Post exposure time should be the same or longer than main exposure time.

Please follow all the laws and regulations in your district. (Please refer to MSDS for details.)

Printight® is a trademark of TOYOBO in Japan.

Photo-sensitive Printing Plate

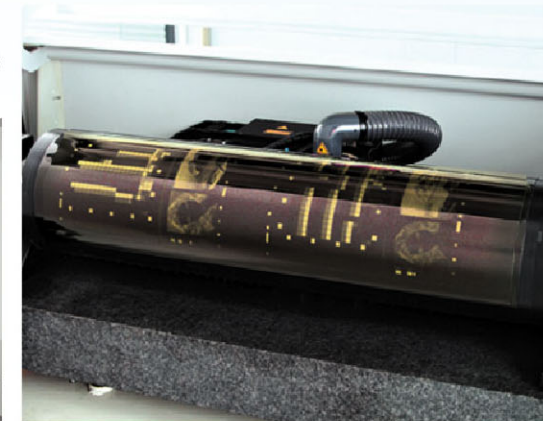
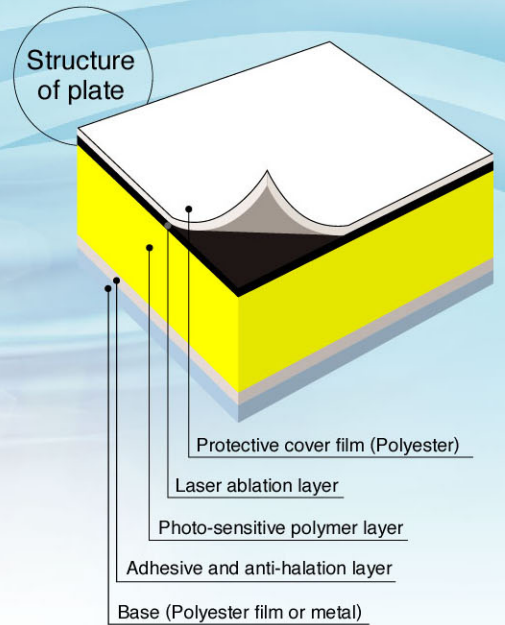
Printight®

CTP QF/QM series

Printight® CTP Advantages

1. Higher and clearer reproduction of screen dots and letters
2. Solvent-free in the plate making process, toxic-free for the operator
3. Reduction in the total cost
 - a) Unnecessary to make film-negatives
 - b) Consistent plate quality due to simplification of pre-press process
 - c) Reduction in the personnel costs
4. Improvement of productivity

Shorter plate-making time due to the simplification of pre-press process



Printight® CTP Product Lineup

Base	Item Code	Hardness (shore D)	Plate Thickness (mm)	Relief Depth (mm)	Reproduction	Key Advantages	Main Application
Film	QF95KC	67	0.95	0.68	175lpi (1-95%)	Sharp and fine line Good for flat bed printing	Tag, Label
	QF95JC	55	0.95	0.68	200lpi (1-95%)	Best reproduction Outstanding ink transfer	Tag, Label
	QF80JB	55	0.80	0.59	200lpi (1-95%)		
	QF95SB	40	0.95	0.74	150lpi (1-95%)	Excellent ink transfer Good for rotary press	Business form Tag, Label
	QF70SA	40	0.70	0.55	150lpi (1-95%)		
	QF152BB	25	1.52	1.31	150lpi (2-95%)	Good for business form and varnish coating	Business form
	QF95BB	25	0.95	0.74	150lpi (2-95%)		
Metal	QM95KT	67	0.95	0.69	175lpi (1-95%)	Sharp and fine line Good for flat bed printing	Tag, Label
	QM95AR	67	0.95	0.65	175lpi (1-95%)	Good for dry offset printing	Can, Plastic cup Tube
	QM83AR	67	0.83	0.53	175lpi (1-95%)		
	QM73AR	67	0.73	0.43	175lpi (1-95%)		
	QM120JR	55	1.20	0.90	200lpi (1-95%)	Best reproduction Outstanding ink transfer	Tag, Label Security printing
	QM95JR	55	0.95	0.65	200lpi (1-95%)		
QM73JL	55	0.73	0.54	200lpi (1-95%)			

Printight® Type and application

Type	Hardness (Shore D)	Base Material	Cover Film	Description	Plate Thickness (mm)	Relief Depth (mm)	Screen Reproducibility	Min. Isolated Dot (μm)	Min. Fine Line (μm)	Application										Advantage		
										General Printing		Business Form			Tag, Label		Textile	Varnish	Offset		Embossing	Pad
										Letters	Picture	Business Form	Back Carbon	Desensitized	Label (Flat Bed)	Label (Rotary)	Towel	UV-varnish	Dry-off		Crush print	Pad
P	87°	Metal	Plain / Matt	PM43S	0.43	0.21	150L(3~95%)	100	30												Pad Printing	
				PM73R	0.73	0.43	150L(3~95%)	200	40													
K	67°	Film	Plain	KF58GD	0.58	0.22	150L(3~95%)	200	40												Flat Bed Printing Tag, Label	
				KF80GC	0.80	0.53	150L(3~95%)	200	40													
				KF95GC	0.95	0.68	150L(3~95%)	200	40													
				KF80MC	0.80	0.53	175L(1~95%)	200	40													
				KF95MC	0.95	0.68	175L(1~95%)	200	40													
		Metal	Plain	KM43GS	0.43	0.21	150L(3~95%)	100	30													
				KM53GS	0.53	0.31	150L(3~95%)	100	30													
				KM58GS	0.58	0.36	150L(3~95%)	100	30													
				KM73GR	0.73	0.43	150L(3~95%)	200	40													
				KM83GR	0.83	0.53	150L(3~95%)	200	40													
				KM95GR	0.95	0.65	150L(3~95%)	200	40													
				KM175GR	1.75	1.45	150L(3~95%)	200	40													
		Metal	Matt	KM95MR	0.95	0.65	175L(1~95%)	200	40													
				Plain	KM73AR	0.73	0.43	175L(1~95%)	100	30												
					KM83AR	0.83	0.53	175L(1~95%)	100	30												
KM95AR	0.95	0.65	175L(1~95%)		200	40																
L	55°	Film	Matt	LF80B	0.80	0.592	175L(1~95%)	150	30											Highest Quality Rotary Printing		
				LF95C	0.95	0.68	175L(1~95%)	150	30													
J	55°	Film	Matt	JF80B	0.80	0.592	175L(1~95%)	200	30											High Quality Rotary Printing		
				JF95C	0.95	0.68	175L(1~95%)	200	30													
				JM95T	0.95	0.69	175L(1~95%)	200	30													
E	55°	Film	Plain	EF95GC	0.95	0.68	150L(3~95%)	200	40											Rotary Printing		
				EF80MB	0.80	0.592	175L(1~95%)	200	40													
				EF95MC	0.95	0.68	175L(1~95%)	200	40													
		Metal	Plain	EM95GR	0.95	0.65	150L(3~95%)	200	40													
				EM95MR	0.95	0.65	175L(1~95%)	200	40													
S	40°	Film	Plain	SF70GA	0.70	0.55	150L(3~95%)	200	40										Business Form Rotary Printing			
				SF95GB	0.95	0.68	150L(3~95%)	200	40													
U	27°	Film	Plain	UF70GA	0.70	0.55	150L(3~95%)	200	40										Business Form			
				UF95GB	0.95	0.74	150L(3~95%)	200	40													
				UM95GS	0.95	0.73	150L(3~95%)	200	40													
B	25°	Film	Matt	BF95B	0.95	0.74	150L(3~95%)	200	40										Business Form			
				BF170B	1.70	1.492	150L(5~90%)	400	100													
				BF200B	2.00	1.78	150L(5~90%)	400	100													
C	25°	Film	Plain	CF200GB	2.00	1.78	150L(5~90%)	400	100										Heat-resistant			
				CM170GS	1.70	1.48	150L(5~90%)	400	100													

*The special thickness and size plates can be made with extra cost and delivery time upon request.