



EFI Colorproof™ XF

Proofing RIP solution for Highest Color Accuracy and Perfect Color Control.

EFI Inkjet Printing Applications



Choose the Industry-Leading Cross-Platform Solution for Proofing to Produce High Quality Color Every Time!

EFI™ Colorproof™ XF offers a professional-level RIP solution for graphic arts businesses that need to produce ISO 12647-7/8 compliant validation prints and contract proofs as well as G7 compliant proofs on inkjet, laser and LED printers. The solution gives you all the tools to manage your color the best and to master any proofing or printing task.

Get Flexibility through a Modular, Cross Platform Solution

Colorproof XF's modular architecture allows you to customize the ICC compliant solution to meet your specific needs and operation size, whether you are doing proofing, photo or large-format production. The cross platform client/server application also is easy to set up, configure and use because of its application wizards and intuitive user interface. These tools allow you to easily manage each job, output configuration and location in a remote proofing environment.

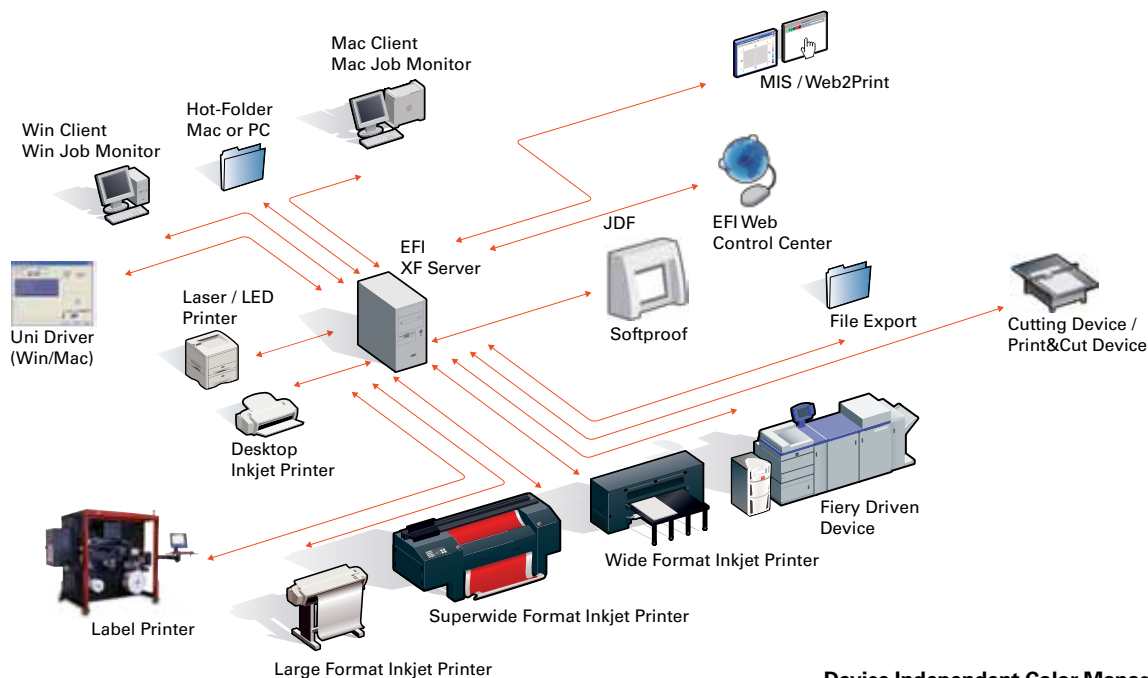
Achieve Accurate Results Every Time with Breakthrough Color Technology

Colorproof XF comes with many features to ensure that you produce consistent and accurate color every time.

It provides you with all the necessary tools to set up your whole system and environment perfectly. It also lets you easily optimize the color quality of the included linearization/profile sets. In addition, its intelligent calibration features enable you to bring back your system to its original state.

With the cutting-edge spot color simulation technique, Colorproof XF also creates spot color simulations with challenging low Delta Es. Spot colors can be routed to any type of spot color, including white, gloss or metallic inks, and spot color editing tools for visual fine tuning provide you with great flexibility for managing spot colors.

Multi-channel job proofing also becomes easier because colors and channels are automatically routed to each other as long as the multi-channel reference profile includes the color names that match the channel of the job.



**Device Independent Color Management with
EFI Colorproof XF.**



You also can harness EFI's patent-pending DynamicWedge™, a dynamically created control strip that shows jobs' key colors – including spot colors – for verifying, and if required, optimizing their color accuracy.

In addition, Colorproof XF supports the latest printer technology with an embedded spectrophotometer that automates your workflow and maximizes your productivity. The technology handles each step of the color measurement process automatically from linearization, profiling, calibration, optimization and verification. It also enables you to print labels directly on the output.

Increase your Efficiency and Speed with Powerful Production Tools

The solution offers production tools that transform your printer into a fast and efficient production device. These tools include functions, such as tiling, step & repeat and color adjustments. In addition, Colorproof's outstanding nesting capabilities lower your production costs dramatically by decreasing paper waste. Plus, the optional Cut Marks and Cutting Options allow you to manage your print cutting to produce anything from contour-cut graphics to packaging mock-ups.

Supports Industry Standards for Greater Flexibility

Colorproof XF is focused on supporting industry standards, so it can be easily integrated into open standard workflows. As a result, you can do tasks, such as produce ICC compliant proofs according to ISO12647-7/8 or G7 or process PDF/X files or process PANTONE® Plus spot colors. Colorproof XF also supports the latest technologies for streamlining and enhancing workflow communication, such as the Adobe® PDF Print Engine.

Color Verifier also easily verifies any proofing standard based on presets. In addition, individual presets can be defined with the criteria and tolerances as needed and can even be specified if they are normative and informative. Updating existing or adding individual standards also can be done quickly and easily.

Get the Closest Match to the Final Run

While proofs usually match the final run in terms of color, they often times look too "good (or smooth)" because the final run characteristics typically are not simulated. Colorproof XF's final run characteristic simulation features deliver the closest match to the final run. Missing dot, first printing dot and noise simulation are powerful features for matching the press characteristics in particular in gravure and flexo printing.

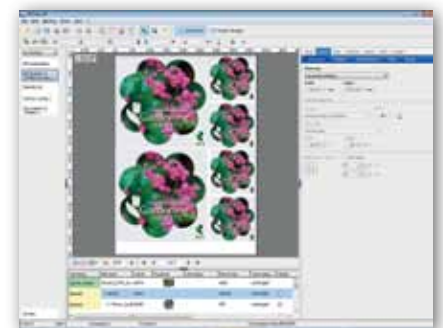
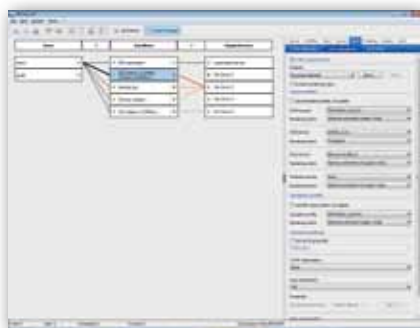
Harness the Benefits of Remote Proofing with Integrated Technology

The solution comes with integrated remote proofing technology to easily set up remote proofing workflows. It ensures consistent proof results at any location in your remote environment. Combined with EFI™ Web Control Center, a Web-based application for distribution and remote control of proofing jobs, and the latest printers with embedded spectrophotometers, you can profit from the most efficient remote proofing workflow ever and eventually do soft proofing.

If you want to only do processing, printout and verification of remote proofing jobs, then choose the affordable EFI Colorproof XF Satellite. The solution only supports the Remote Proofing Format (RPF) as the input format and already includes the Color Verifier Option.

Make your Color Supply Chain Seamless Using Other EFI Solutions

Using Colorproof with other EFI solutions gives you powerful, flexible and seamlessly integrated solutions for your Color Supply Chain – the end-to-end process of producing good color from design to production to output. The benefits include faster execution, reduced costs and consistent corporate colors. By adding EFI MIS/ERP and Web-to-Print solutions with improved JDF support, you also streamline your production process, increase your productivity, and save even more money by avoiding redundant steps.



Cost-effective and efficient: Colorproof XF's workflow based job processing, the Dynamic Wedge and the integrated nesting function.

XF Components

Colorproof XF Basic Package

Provides high-performance proofing and print functions including linearization tools. The Basic Package consists of Colorproof XF Server, an unlimited number of Client Options and a Printer Option M.

Product Options

Color Manager Option: Provides ICC-based tools for professional creation of ICC and device link profiles.

Color Verifier Option: Verifies the quality and reliability of the printouts through measuring and comparing color values against ISO, G7 or own quality standards.

Cut Server Option: Offers a comprehensive cutting solution that drives vinyl cutters and routing tables from industry-leading partners.

Cut Marks Option: Completes and speeds up the production process by supporting all industry standard cutting and finishing marks and methods

Dot Creator Option: Outputs contone data as screened prints or proofs to simulate the AM screening characteristics of the final run.

OneBit Option: Allows users to proof the screening of the final run by using the screen data created by the film setter or plate setter RIP.

Production Option: Transforms the large-format / wide format printer into a fast and efficient production device by functions, such as tiling, step & repeat, color adjustment and clean color.

Spot Color Option: Enables simple processing and true-color output of jobs with spot colors. Color libraries for PANTONE, HKS and HKS 3000 Plus, Toyo and DIC are included.

Japanese Font Option: Offers integrated font download and additional Japanese characters.

Output Options

Printer Options M, XL and XXL: Supports a wide range of inkjet, LED and laser printers of various printer vendors, depending on the size of your printer. It comes with Printer Option M for up to 18" or A2 Printer Option XL for 24" printers Printer Option XXL for printers bigger than 24"

Dedicated Printer Options:

- Printer Option VUTEK for EFI VUTEK printers
- Printer Option Rastek for EFI Rastek printers
- Printer Option OKI for OKI printers

Print & Cut Option: Enables one-step Print & Cut on supported print & cut devices (includes a Printer Option XXL).

Fiery Option: Produces color managed files on xerographic devices driven by external and embedded Fiery controllers.

File Export Option: Exports color managed TIFF and PDF files.

System Requirements:

www.efi.com/XF/Hardware-Requirements

Detailed information on the individual options can be found on the relevant data sheets. Find out more at www.efi.com.

Beat the competition and profit with EFI's integrated Fiery®, VUTEK®, Jetrion®, Rastek™, Print MIS and Web-to-Print solutions. Visit www.efi.com to learn more.