

tesa Solutions for the Flexible Packaging Industry

Optimizing the Entire Printing Process



Reliable Technique, Proven Performance: tesa® Softprint 20-mil

This tesa solution was developed and tested in close cooperation with well-known press manufacturers under a variety of typical production conditions. Their unanimous assessment:

The details make the difference!

- The PE (polyethylene) foam has an optimized recovery capability, supporting consistent print results at higher speeds.
- Higher foam elasticity transmits even the finest plate details.

tesa® Softprint – Optimum Thickness Tolerances:

- The properties of the PE (polyethylene) foam used have been optimized with thickness tolerances in mind; the foam has been neither thermally nor mechanically manipulated during production.
- The consistent tape thickness supports consistent ink distribution.
- Set-up time is also reduced, which is especially important for repeat jobs.

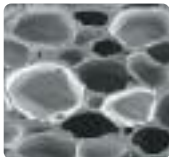
Always the right adhesive strength, which ensures:

- Simple repositioning of tape and plate before printing
- High bond strength during printing, eliminating edge-lifting
- Low increase in peel adhesion allows for simple, residue-free demounting of both plate and tape after printing

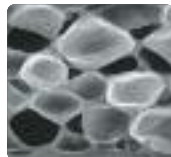
Recovery Rate

The secret of tesa® Softprint foam:

- Small, completely closed, spherical foam-cells
- Evenly distributed cell structure
- Stable foam structure at speeds up to 600 meters/minute



Foam pores prior to printing



Foam pores after 1,000,000 meters of printed web

Printing Set-up

Set-up time



tesa adhesive tape



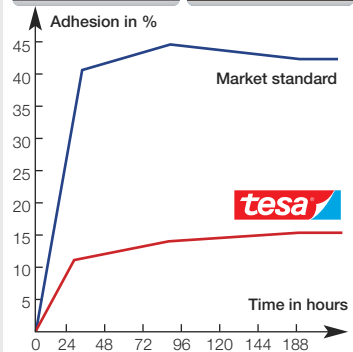
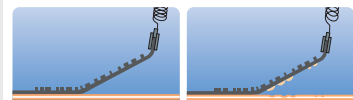
Market standard



Increase of Peel Adhesion

tesa adhesive tape

Market standard



Comparison of Print Results

Standard plate mounting tape



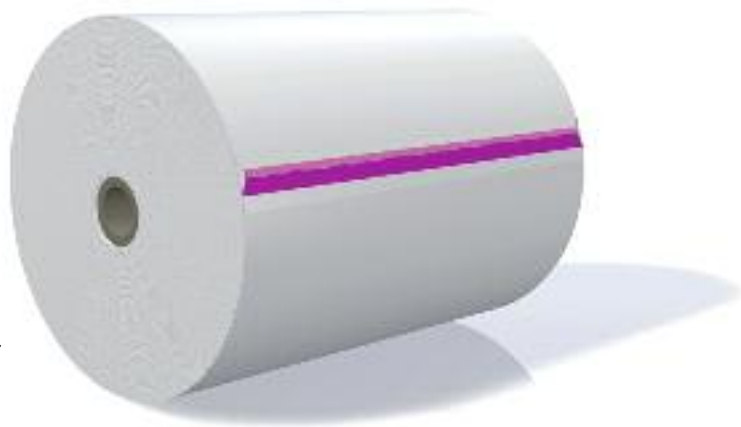
With conventional plate mounting tapes, press vibrations cause unwanted stripes, which means an imperfect print image. Block and even screen printed areas appear faint.

tesa® 52223 Softprint x-Soft



tesa® 52223 helps to minimize the unwanted stripes, which is achieved by absorbing and minimizing the vibrations during printing.

Succeed with tesa – Take Advantage of the Best Performance



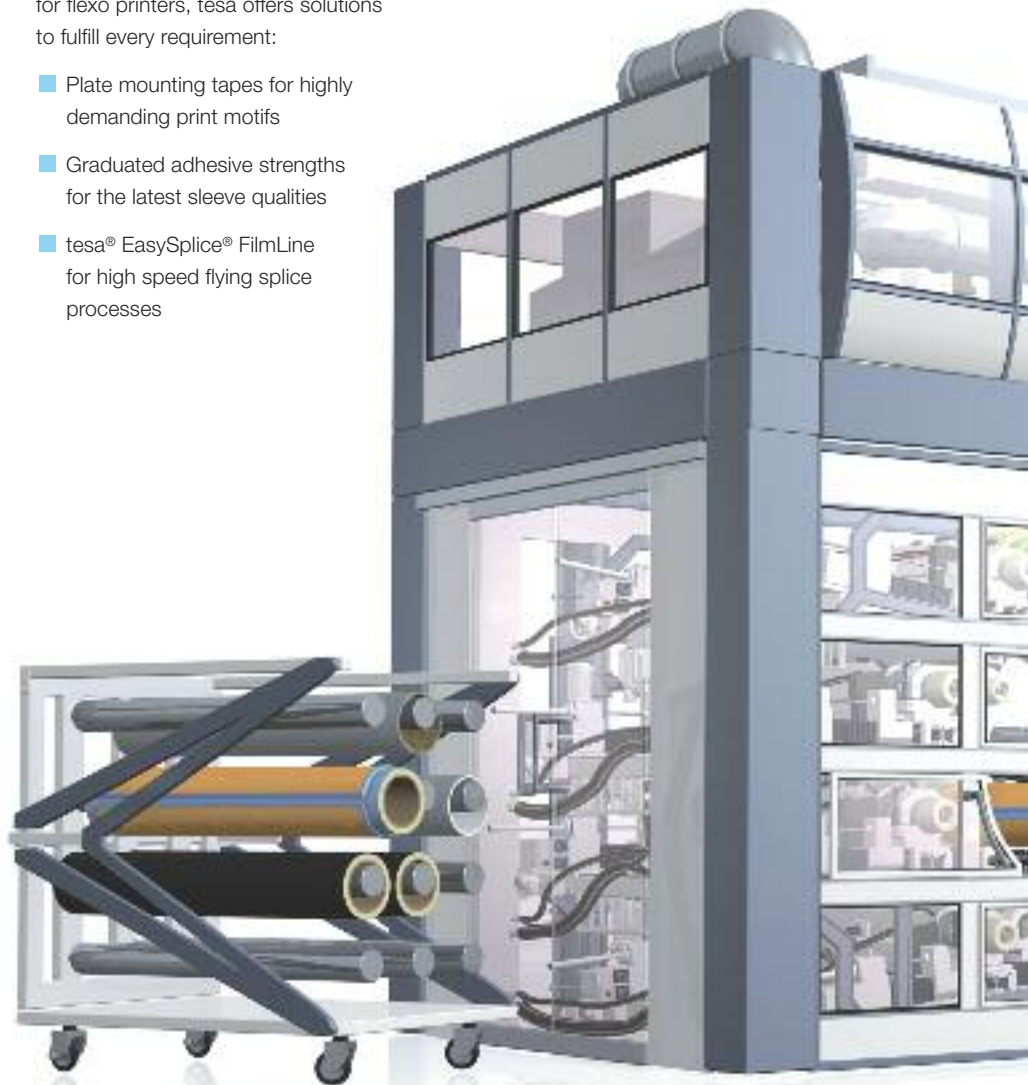
Printing is a business where both excellent print results and high process efficiency go hand in hand.

For many years, tesa® Softprint plate mounting tapes have delivered on both these counts, helping printers to optimize print results and improve processes. With our industry experience and understanding of the total process, tesa provides adhesive solutions for every step of the flexible packaging print-run.

In combination with the unrivaled service provided by our industry experts across the world, tesa provides packaging printers with ideas to optimize their processes, along with the means to make it happen.

With a comprehensive range of tapes for flexo printers, tesa offers solutions to fulfill every requirement:

- Plate mounting tapes for highly demanding print motifs
- Graduated adhesive strengths for the latest sleeve qualities
- tesa® EasySplice® FilmLine for high speed flying splice processes





The starting point for achieving a new dimension of efficiency – tesa® 51905 EasySplice® FilmLine – now for flexo printers, too!

Since 2000, tesa has led the application of modern straight-line splicing in the paper producing and converting industries. This innovative concept now comes to the film-processing industry with tesa® EasySplice® FilmLine. Because of recognizable improvements in efficiency, tesa® EasySplice® FilmLine is increasingly regarded as the standard method for splicing in the package printing industry.



Splicing

Easy and fast splice preparation, high splice security, constant print results, and less waste
tesa® 51905 EasySplice® FilmLine





Roller Wrapping

Keeps the printed substrate evenly distributed during printing; ensures greater reliability and continuity in the print run; the adhesive allows easy removal, even after a prolonged period.

- tesa® 4563 (smooth)**
- tesa® 4863 (embossed)**



Plate Mounting

The characteristics of foam quality, along with other variables, have a crucial effect on print result. All tesa plate mounting tapes are characterized by:

- Constant tape thickness
- Optimized recovery rate
- High and even foam elasticity

The formula for meeting increased demand for the best flexo printing is: the finer the dots, the harder the plate, and the softer the tape.

Digitally produced plates are harder and allow the finest dots, so a softer tape is needed.

tesa has adapted its assortment of foam-based plate mounting tapes to meet the demands of today's different applications.



Edge Sealing

tesa supplies plate edge-sealing products with a broad range of benefits. The adhesive sticks to photopolymer plates and is subsequently easy to remove without leaving any residue.

- tesa® 53016**
- tesa® 53017**



Failure Flagging

Varied color offering allows for distinct imperfection marking

tesa® 4104



Core Starting

Sufficient adhesion properties to attach the web to the core

tesa® 4959



End-Tabbing

Safe bonding on all substrates; in different colors or transparent version

tesa® 4104



tesa Flexible Packaging Tapes

Application	Product	Backing	Colors	Adhesive	Tape Thickness
Plate Mounting	tesa® 52020 Softprint	PE ¹ foam	Blue logo	Acrylic	20 mil
	tesa® 52021 Softprint	PE foam	Purple logo	Acrylic	20 mil
	tesa® 52022 Softprint	PE foam	Red logo	Acrylic	20 mil
	tesa® 52120 Softprint	PE foam	Blue logo	Acrylic	20 mil
	tesa® 52121 Softprint	PE foam	Purple logo	Acrylic	20 mil
	tesa® 52122 Softprint	PE foam	Red logo	Acrylic	20 mil
	tesa® 52220 Softprint	PE foam	Blue logo	Acrylic	20 mil
	tesa® 52221 Softprint	PE foam	Purple logo	Acrylic	20 mil
	tesa® 52222 Softprint	PE foam	Red logo	Acrylic	20 mil
	tesa® 52223 Softprint	PE foam	Yellow logo	Acrylic	20 mil
Splicing	tesa® 51905 EasySplice® FilmLine	Paper	Red	Modified rubber	4 mil
Edge Sealing	tesa® 53016	S-PVC ²	Yellow	Modified rubber	5.3 mil
	tesa® 53017	S-PVC	White	Modified rubber	6 mil
Roller Wrapping	tesa® 4563	Si-coat ³ fabric	Gray, Smooth	Modified rubber	16 mil
	tesa® 4863	Si-coat fabric	Gray, Structured	Modified rubber	25 mil
Core Starting	tesa® 4959	Non-woven	Translucent	Modified acrylic	4.5 mil
Flagging/ End-Tabbing	tesa® 4104	H-PVC ⁴	8 Colors	Rubber	2.5 mil

¹PE - polyethylene ²S-PVC - soft-polyvinyl chloride ³Si-coat - silicone rubber-coated fabric ⁴H-PVC - hard-polyvinyl chloride

tesa products prove their impressive quality day in day out in demanding conditions and are regularly subjected to strict controls. All information and recommendations are provided to the best of our knowledge on the basis of our practical experience. Nevertheless, tesa tape, inc. can make no warranties, expressed or implied, including, but not limited to any implied warranty or merchantability or fitness for a particular purpose. The user, therefore, is responsible for determining whether the tesa product is fit for a particular purpose and suitable for the user's method of application. If you are in any doubt, our technical support staff will be glad to advise you.



Toll-free: 866.282.7697 • Fax: 800.223.6869
www.AndVre.com • E-mail: info@AndVre.com

