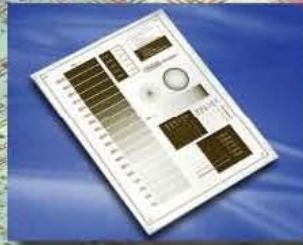




WATER-WASH PLATE

CTP Letterpress Products



Printight® QF

*Experience
the Difference!*



**ANDERSON &
VREELAND** INC.

Printight® QF

IMAGE REPRODUCTION

Halftones	: 1 to 95% at 200LPI (80lines/cm)
Isolated dots	: 100 μ m (0.004inches) diameter
Fine lines	: 30 μ m (0.001inches) width

PLATE PROPERTIES

Durometer(Shore D)	: 55°
Ink compatibility	: Oil-based ink, UV-ink

PROCESSING TIMES

Process	Thickness	0.80mm (0.032inches)	0.95mm (0.037inches)
Face Exposure (chemical lamp)		2'~5' ^{o1}	2'~5' ^{o1}
Washout		2'~2.5' ^{o2}	2.5'~3' ^{o2}
Drying		10'	10'
Post Exposure		4'~	4'~

※1 Exposure time, which depends on the kind of lamp, lamp age and image characteristics, should be re-adjusted for optimum plate quality.

※2 Washout time depends on plate thickness. Water temperature 25°C(77°F).

PLATE SPECIFICATIONS

Grade	Gauge mm(inches)	Base mm(inches)	Size ^{o1} mm × mm(inches)	Main Applications ^{o2}
QF80JB	0.80(0.032)	Polyester Film	420 × 594 (16.5 × 23.4)	Label
QF95JC	0.95(0.037)	0.125-0.350 (0.005-0.069)	594 × 841 (23.4 × 33.1) 635 × 762 (25 × 30)	Commercial Printing

※1 Other sizes and gauges are available with a minimum order and / or upon your request at an additional cost.

※2 Other applications are also available.

Waste Water Treatment : Please follow all the laws and regulations in your country.



©Printight is a trademark of Toyobo in Japan.

Toll-Free: 866.282.7696 • Toll-Free Fax: 800.223.6869
www.AndersonVreeland.com • E-mail: info@AndVre.com